



# CR30-ORACLE<sup>CR</sup>

*A "Revelation" in Computed Radiography  
Veterinary System*

 **Quantum**  
MEDICAL IMAGING  
*Innovations in Digital Imaging*

**AGFA**   
HealthCare  
Solution for Quantum Medical Imaging



## Quantum/Agfa Veterinary Practice Package

### Configured to meet your Veterinary Practice needs

#### CR30-ORACLE<sup>CR</sup> Veterinary Package from Quantum Medical Imaging

The CR30-ORACLE<sup>CR</sup> Veterinary System Package introduces advanced features and functionality to the world of Veterinary practice. Most importantly, the CR30-ORACLE<sup>CR</sup> is configured with MUSICA<sup>2</sup> GenRad Advanced Image Processing Software from Agfa HealthCare. This provides the Veterinarian with unsurpassed image quality; because every patient deserves the highest image quality technology can deliver without compromise, while maintaining the lowest possible dose.



The CR30-ORACLE<sup>CR</sup> Veterinary Package is economically priced. Loaded with easy-to-use Agfa NX software features, designed specifically for Veterinary practice to optimize workflow and make patient care your number one priority, this great package comes complete with the software and hardware you need to **Go Digital** today. The CR30-X Digitizer is a table-top CR designed for the workflow found in the Veterinary practice setting. The practitioner can perform all their daily tasks using Agfa's NX worklist and examination windows. The worklist window allows the radiographer to enter patient data or select it from a RIS-Based worklist (optional).

In the examination mode, the radiographer can acquire the image and apply image processing automatically. Grid Suppression software is included to automatically detect and remove grid patterns caused by stationary grids and remove Moiré artifact from monitor. The fast preview feature allows confirmation of correct positioning and exposure within seconds, even while the final image is being processed.

#### Veterinary Specific Splash Screen



The practitioner can review and interpret the patients' image shown in full screen mode, while using Pan and Zoom functions. Options are provided for a 2MP or 3MP monitor if needed. The images can be sent to print, to another workstation or can be stored on the ORACLE<sup>CR</sup>. The system includes a 500GB x2 Level 1 RAID HD, capable of storing 15,000 images. The compact and convenient CR30-ORACLE<sup>CR</sup> is easy to install use and maintain, providing seamless integration and multiple functions.

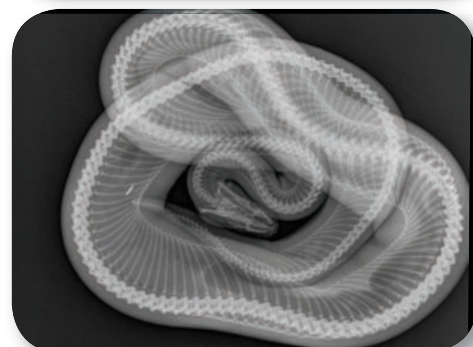
*This one product can perform multiple functions:*

- Image Acquisition
- Image Processing
- Image Review and Interpretation
- Image Distribution
- Image Storage





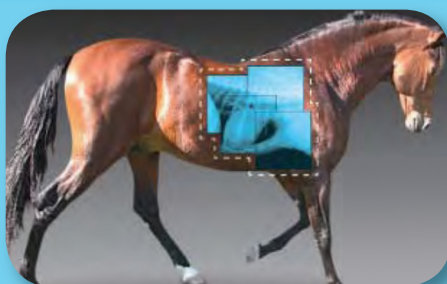
## MUSICA<sup>2</sup>-GenRad Advanced Image Processing Software



### Advanced Image Processing Optimizes Image Quality and Workflow

Agfa HealthCare's unique and patented Multi-scale Image Contrast Amplification algorithm, "MUSICA," automatically processes the radiographic image at multiple frequency ranges (detail sizes) and optimizes the contrast within each of these ranges. MUSICA<sup>2</sup> is a second generation MUSICA which intelligently renders exceptional bone and soft tissue detail simultaneously. MUSICA<sup>2</sup> analyzes the image data before applying optimal contrast and density to all details within the image.

This results in maximum radiographic detail throughout the image, greatly reducing the need for manual activities such as window and level. The improved image quality, productivity and workflow result in a process that is more efficient from start to finish.



### Equine Facilities

The CR30-ORACLE<sup>CR</sup> Veterinary Package extends its great benefits to any equine imaging facility. By utilizing digital technology the procedures provide exceptional image quality while the flexibility of a cassette based system provides considerable time savings to the busy departments. The small foot-print of the system allows for quick installation with commodious space savings. The CR30-ORACLE<sup>CR</sup> Laptop configuration provides great flexibility and ease of use to any facility that requires studies to be performed in-field.



## NX Software - Veterinary Specific Configuration

The CR30-ORACLE<sup>CR</sup> Veterinary Q-1 Package Software Includes

NX Premium EL CR30-X Software and MUSICA<sup>2</sup> GenRad™ SOFTWARE

On-line processing software performs multiple tasks:

- Automatic Image-Processing (utilizing MUSICA<sup>2</sup> GenRad™ Software) of incoming raw data from the CR unit
- Automatic or manual window/level setting
- Manual "black-border" collimation
- Pan, Roam, Zoom, Flip/Rotate, Free Text Annotation, R/L Markers, Search Tools
- HIPPA security log and IHE workflow compatibility
- Examination Window for Image QC
- Editing Window for Advanced Image QC Functions and Options
- DICOM PRINT
- Printer ready configuration can print to Agfa's DryStar dry printers and other DICOM enabled printers (multiple connections allowed)
- DICOM STORE/SEND
- DICOM-Store Connection Software allows network transmission in the DICOM standard communication protocol format
- DICOM Storage Commit
- Images can be transmitted via network to PACS, standalone review stations, teleradiology servers in DICOM or JPEG formats.

*Superior system sensitivity means using less exposure time thus emitting a lower radiation dose compared to other table top CR's*

## Veterinary Specific Configuration

Default Exam Tree - to be adapted according to needs - (e.g. non-equine site or equine only site)

Add Image																			
Small Skeletal < 10 kg			Medium Skeletal 10-25 kg		Large Skeletal 25-45 kg		Head		Thorax - Abdomen - Pelvis		Metacarpus (Front Cannon)		Front Fetlock						
Small Soft Tissue < 10 kg			Medium Soft Tissue 10-25 kg		Large Soft Tissue 25-45 kg		Radius - Shoulder		Carpus (Knee)		Hind Fetlock		Tarsus (Hock)						
Small Animal / Reptile								Neck-spine							Tibia - Stifle		Metatarsus (Hind Cannon)		
Skull LAT		Skull Open Mouthed		Skull Nasal Chambers		Skull DV/VD		Skull Oblique		Neck LAT		Neck VD				Pelvis LAT		Pelvis VD	
Spine-Cervical LAT		Spine-Thoraco Lumbar LAT		Spine-Lumbo Sacral LAT				Shoulder LAT		Elbow LAT		Carpus LAT		Stifle LAT		Tarsus LAT		Paw LAT	
Spine-Cervical VD		Spine-Thoraco Lumbar VD		Spine-Lumbo Sacral VD				Shoulder AP		Elbow AP		Carpus AP		Stifle AP		Tarsus AP		Paw DP	



## NX Software - Veterinary Specific Configuration

### CR30-ORACLE<sup>CR</sup> Veterinary System Features

- Supports DICOM LOSSY & LOSSLESS Jpeg Image Compression formats
- Increased Image Storage – 12,000 to 15,000 Images
- NX 2008 Software Included
- Auto-select next exposure after ID
- Improved Work-list Search Tool
- “FULL SCREEN MODE”
- “COMMENT” Field
- Forced Operator ID and/or Patient Data Entry (Configure-able Option)
- Possible to connect to Multiple RIS (Requires NX RIS Software)
- Report Format for Repeat-Reject Analysis (Requires NX QA Software)
- Veterinary Specific User Interface
- Veterinary Splash Screen
- Veterinary Default Exam Trees
- DICOM Correction Item CP-643 For Veterinary introduces new attributes: Sex Altered (Yes/No), Breed, Species, Breed Registry, Owner.

### Veterinary Specific Configuration DICOM

Item CP-643 for vet introduces upgraded attributes

Attribute Name	Tag
Patient species description	(0010, 2201)
Patient breed description	(0010, 2292)
Breed registration sequence	(0010, 2296)
• Breed registration number	(0010, 2295)
• Breed registration code sequence	(0010, 2296)
Responsible person	(0010, 2297)
Responsible organization	(0010, 2299)
Patient's Sex Neutered	(0010, 2203)

## DICOM Grayscale Display Standard “P-Value” OUTPUT CD/DVD EXPORT DICOM image with viewer and JPEG formats

- Grid Line Suppression Software: (E4ZX8)
- Automatic Detection & Removal of Grid patterns caused by stationary grids
- Removal of Moiré artifact on Monitors
- NX -ID SOFTWARE
- QC and ID software records patient demographic and examination data in a study-oriented format onto the memory chip embedded in the CR30 cassette via radio frequency ID on one exam screen.

## DICOM Veterinary Attributes in Viewer

**Gifford Tracker**

**Patient**

Owner/Animal Name : **Gifford Tracker**

Age : **2 year(s)**

Sex : **Male**

Sex Neutered : **Altered**

Breed Registration : **Federation of Internatio ...**

Species : **Canine**

Breed : **Belgian Street Dog breed**

Referring Vet : **Dr Trouveau**

# Specifications

## CR30-ORACLE<sup>CR</sup> for Veterinary - General Technical Specifications

### Digitizer Type

- CR 30-X Single Plate Reader
- Throughput; up to 76 plates/hour

### LCD Display

- Machine status and error conditions

### Grayscale Resolution

- Data acquisition: 20 bits/pixel
- Output to Processor: 16 bits/pixel

### Reader Dimensions and Weight

- (W x D x H): 693 x 701 x 464mm (27.2 x 27.6 x 18.2 in)
- Depth including input tray: 769 mm (30.3 in)
- Weight: approx. 98kg (216.05 lbs)

### Power

- 120V/60Hz (USA)
- Standby 120 W, max. 250 W, 15A fuse

### Miscellaneous

- 19" High Quality Touchscreen Color Monitor
- CR NX Server: HP 500GB X 2 HD Level 1 Raid PC Workstation, Keyboard, Mouse

### Environmental Conditions

- Temperature: 15° to 30° C (59 to 86° F)
- Humidity: 15 to 75% RH
- Magnetic fields: max. 3.8  $\mu$ T in conformance with EN 61000-4-8: level 2
- Rate of change of temperature: 0.5°C/minute (0.9°F)

### Environmental Effects

- Noise Level. max. 65 dB (A)
- Heat dissipation: standby 120W, max. 250 W

### Approvals

- UL, cUL, CE

### Transport Details

- Temperature: -25 to +55° C (-4 to 131° F) , -25° C for max. 96 hrs
- Humidity: 5 to 95% RH

## Cassette Sizes: CR MD4.0T General Cassettes

Cassette Sizes	Catalog #	Spatial Resolution	Pixel Matrix Size
34 x 43 cm (14 x 17 in)	EVG9S	10 pixels/mm	3480 x 4248
24 x 30 cm	EVHAW	10 pixels/mm	2328 x 2928
18 x 24 cm (option)	EVHBY	10 pixels/mm	1728 x 2328
15 x 30 cm (option)	EVHC1	10 pixels/mm	1440 x 2928

## The Quantum CR30-ORACLE<sup>CR</sup> Q-1 Veterinary Package Includes:

- CR30-X Single Plate Reader
- High Resolution Scanning at 10 pixels/mm
- CR NX Server: HP 500GB x2 HD Level 1 RAID PC Workstation, Keyboard, Mouse
- Intel Core Duo E8400 Processor
- Microsoft Windows XP Pro SP3 OS
- 19" BARCO Color Touchscreen High Quality Monitor with Optimizing Software
- CR NX Premium EL Software
- Patented MUSICA<sup>2</sup> GenRad Image Processing Software
- CR NX Gridline Suppression Software
- CR NX ID and Examination Software
- DICOM Store/Send/Storage Commit and DICOM Print
- DICOM Grayscale display standard "P-Value" Output
- DICOM CD/DVD Export – DICOM Image with a viewer & JPEG formats
- 2 each 35x43 Cassettes with MD4.0T Imaging Plates
- 2 each 24x30 Cassettes with MD4.0T Imaging Plates



*Innovations in Digital Imaging*

© 2009 Quantum Medical Imaging, LLC  
p/n: QMI-CR30-ORACLE<sup>CR</sup> VET (05/09)

### Dealer Information

A Walsh Imaging, Inc.  
55 Cannonball Road  
Pompton Lakes, NJ 07442

Phone 1-866-429-9729  
Web [www.awalshimaging.com](http://www.awalshimaging.com)