



# Enhancing Radiology

Offering digital and conventional X-ray solutions

## Veterinary Flat Panel Retrofit

Features

Specifications

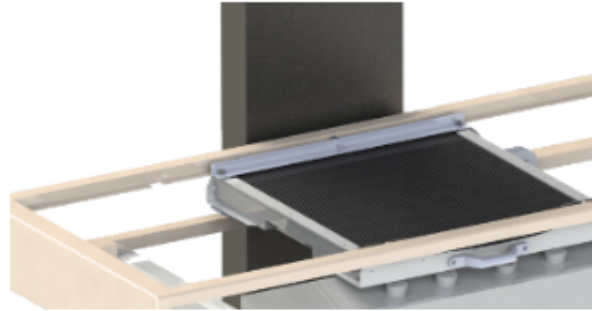
Software

JPI proudly presents a retrofit for veterinary x-ray systems with a flat panel detector.

### Image Receptor

#### Features

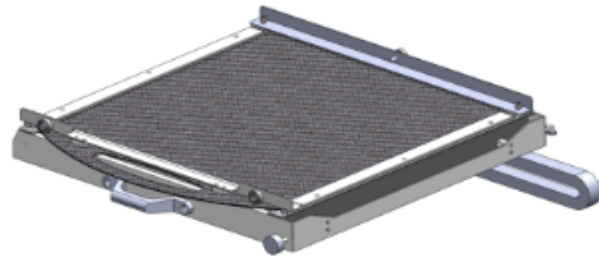
- Flat Panel Detector 17" x 17" (43cm x 43cm)
- TFT with a-Si
- Excellent reliability
- Wide Dynamic Range (14bit A/D)
- Easy Integration
- One tile panel



### Retrofit Package

#### Features

- Installs into the most common veterinary tables
- Installs quickly and simply
- Keep full functionality of table and generator



[DOWNLOAD BROCHURE](#)



## Veterinary Flat Panel Retrofit

Features

Specifications

Software

### Flat Panel Detector (FPD) Technical Specifications:

FPD Specifications:	
Active image size	17" x 17" (43cm x 43cm)
Image pixels	3072 x 3072
Bit depth	14 bits
Pixel pitch	143 Micron
Spatial resolution	3.5 lp/mm
Image acquisition time	less than 7 seconds
input power	100-240VAC, 50/60Hz
Weight	13.4 kg





## Veterinary Flat Panel Retrofit

Features

Specifications

Software

### Feel 2.0 Acquisition software

- Easy to learn and use
- Optimized image processing for each body part
- Side by side multi-image comparison
- DICOM 3.0 for image transfer, worklist etc..
- Fast and easy way to register patients
- Ability to change DICOM image sequence
- Store to CD, DVD, or USB
- print to DICOM or paper printer
- Image manipulation: window level, zoom in/out, crop etc..
- Database import/export

This brochure was put together  
by A Walsh Imaging  
55 Cannonball Road  
Pompton Lakes, NJ 07442

Tel 1-866-429-9729  
Web [www.awalshimaging.com](http://www.awalshimaging.com)

#### Dealer Information

A Walsh Imaging, Inc.  
55 Cannonball Road  
Pompton Lakes, NJ 07442

Phone 1-866-429-9729  
Web [www.awalshimaging.com](http://www.awalshimaging.com)