

Q-VET SERIES





Quantum's Veterinary Imaging Solutions

Digital Work Flow

Traditional radiography is one of the most labor intensive and time consuming services many veterinary practices still use. Storage space, working along side dangerous chemical substances and overall costs are just a few of the factors that have caused veterinarians to look for an alternative to traditional radiography. Quantum's Direct Digital Radiography Systems make a complete digital case and image management a reality. The Q-VET-DRR system conforms to many diverse needs today's veterinary clinics require.

Direct Digital Veterinary Systems

Q-VET-DRR - Direct Digital Radiography Systems have reset the standards for the veterinary radiology industry. Built from the ground up as a truly digital system, along with cutting edge equipment makes the Q-VET DRR System the industry leader.



4

6



Q-VET CR Imaging Solutions

Bringing cost effective imaging solutions through the use of CR30-ORACLE^{CR} Technology. Innovative integration through DiRex-SP.

Q-PACX System - Viewing Solutions

"Q-PACX system comes in three package for use by the veterinary markets. The systems offer larger storage capacity and increased functionality, with additional options to select.



8

9



EZ-Vet Control

EZ-VET system allows for examination parameters to be controlled right at tube side as well as review of exam images directly on the LCD screen. Image review possible in 4 seconds after the initial exposure.

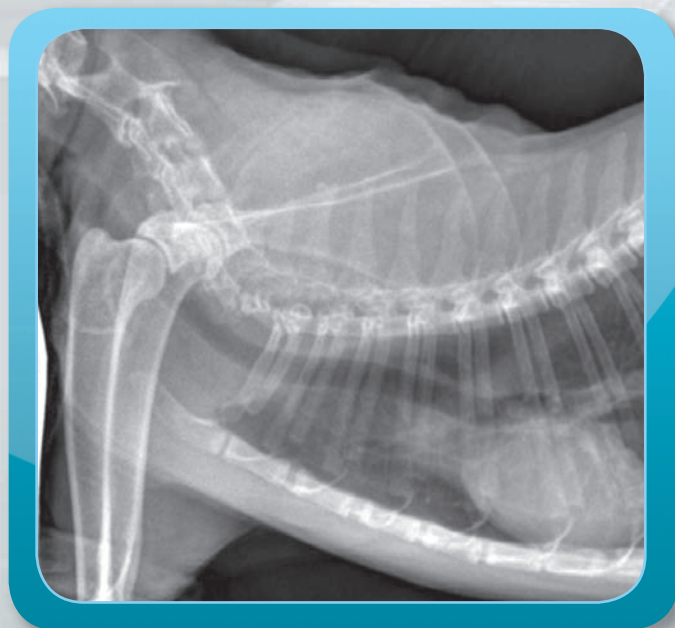
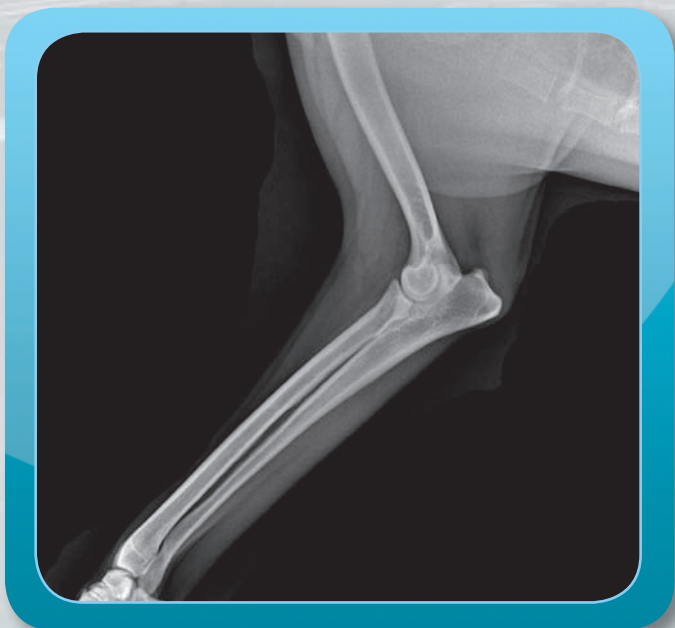
Q-Vet Veterinary Radiographic Systems

Q-VET Product line expands into four different system packages, designed to address the variety of veterinary requirements.

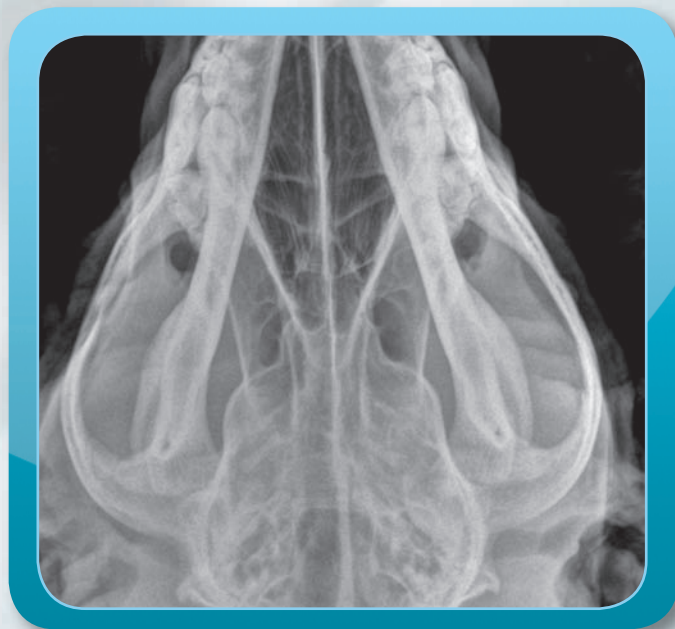


10

2



Direct DIGITAL





Veterinary Direct Digital Imaging Solutions

Q-VET-DRR

The Quantum Medical Imaging Q-VET-DRR Systems bring veterinary technicians today's cutting edge x-ray technology right to their finger tips. This system allows for any veterinary clinic to efficiently crossover into the world of digital imaging. The Q-VET-DRR allows for a much greater exam through-put, the very best image quality while reducing x-ray exposure. The "MaxxVue" software enhances the postprocessing of the digital images allowing for a greater flexibility, manipulation and management of the acquired images.

Q-VET DRR (Digital Radiography) Specifications

Generator

- 40 kW ULTRA High Frequency Generator, 120 kHz plus other x-ray generator power availability
- "EZ Vet-Control" - LCD Color Display with High Resolution Viewing

Table and Tubestand

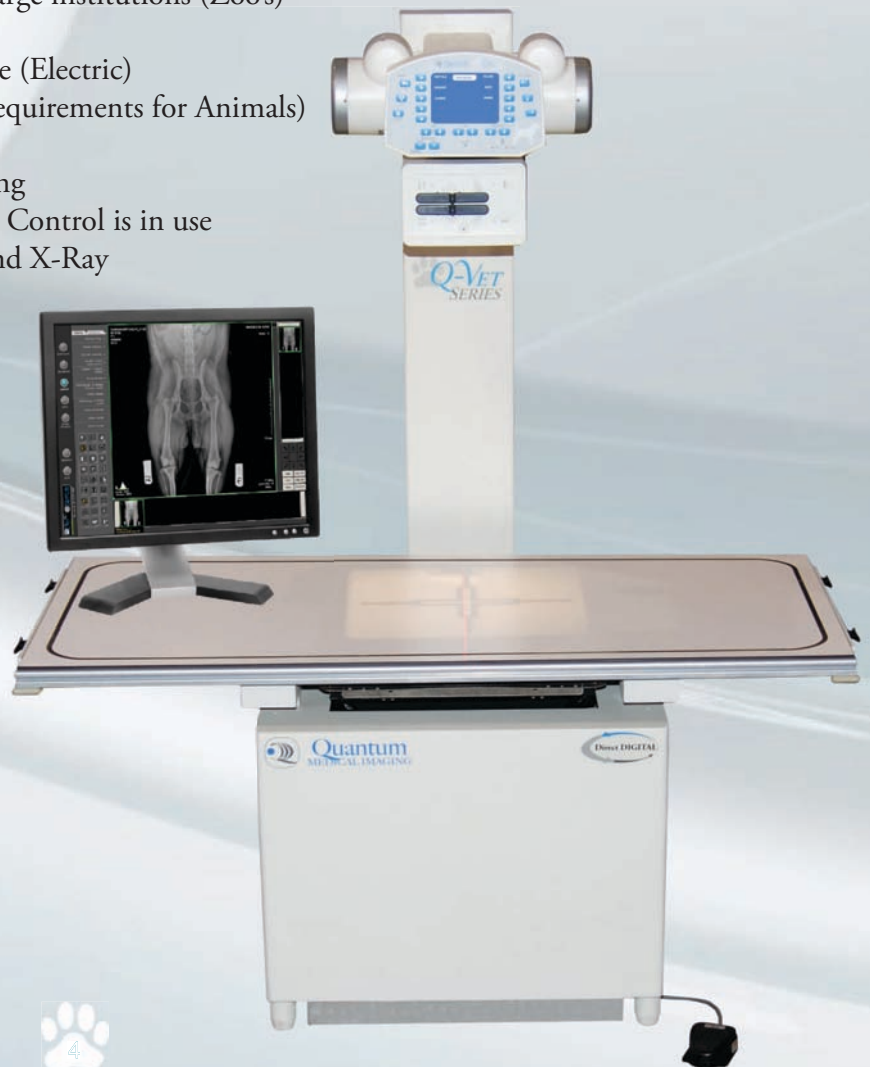
- Integrated Tubestand with 40" SID, Fixed Position at Center of Receptor
- "Four-Way Float-Top Enclosed Table", with Electronic Foot Control
- 650 lb Table Weight Capacity - designed for large institutions (Zoo's)
- "URO-TRACK" System
- 29.5" Longitudinal Travel, 5" Transverse Table (Electric)
- Collimator: Certified for Safety (Meets FDA Requirements for Animals)
- "Light Localizer" for Field Size
- "Laser Feature" for Accurate Animal Positioning
- Collimator Light is activated when Float-Top Control is in use
- Exposure Foot Switch (2 Position) For Rotor and X-Ray
- Large Imaging Area: 47" Complete Coverage

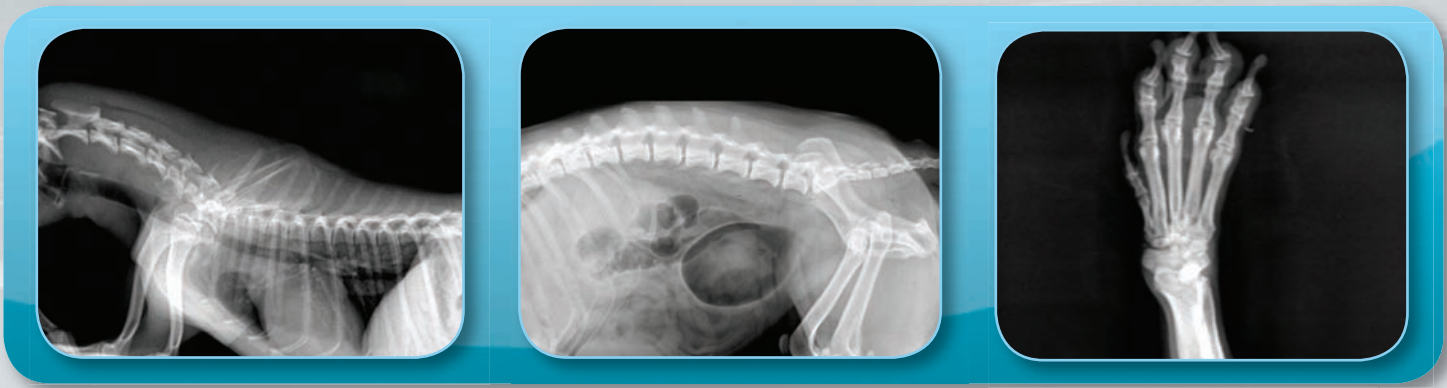
Digital Detector Specifications

- 3.1 lp/mm Image Resolution
- Gadolinium-Oxysulfide Scintillator
- 14" x 17" Field of View

Available Upgrades

- "QXR9": 3.5 lp/mm, with 17" x 17" Field of View (Gadolinium-Oxysulfide or Cesium Scintillator)
- "QXR16": 4.6 lp/mm, with 17" x 17" Field of View (Gadolinium-Oxysulfide or Cesium Scintillator)





Q-VET-DRR - Cost effective benefits of Digital Radiography

The Q-VET-DRR delivers quick study results and image evaluation. Electronic archiving allows for great space savings while eliminating the costs of film at the same time. This results in increased workflow and overall client satisfaction.

Quantum-6MP-Dog-VD_01 (F)
0010755
3 Y
6/4/2009
0212

6/5/2006 3:36:16 PM
Index : 2

135 mm

Level : 2324
Window : 2978

71.88%
Laterality : U
Step :

Save Save All
S & C S & C All
Close Close All

0010755 [F]
Quantum-6MP-Dog-VD...



Veterinary Computerized Radiology Imaging Solutions CR

CR30-ORACLE^{CR} *Veterinary System*

with Office Viewer



The CR30-ORACLE^{CR} Veterinary System Package introduces advanced features and functionality of a CR system to the world of Veterinary practice. Most importantly, the CR30-ORACLE^{CR} is configured with Dedicated Image Processing for Veterinary Applications MUSICA² Small Animal from Agfa HealthCare. This provides the Veterinary practices with unsurpassed image quality and features designed to maximize efficiency and through-put while making patient care a number one priority.



CR30-ORACLE^{CR} Veterinary System is available as a Laptop configuration

DiRex-SP

A Complete Digital Imaging System Solution - As easy as 1...2...3...



Digital Integrated Radiography (DiRex) is your fastest way to benefit from Digital Radiography. The DiRex-SP Digital Veterinary System, features the CR30-ORACLE^{CR} technology. The system offers superior quality study results at a very low exposure dose. The strength of the system lies in the flexibility to integrate into any existing Quantum Radiographic System or a CR30 unit. The NX Workstation software which provides the technologist with state of the art features, is now configured to a single touch screen control. Single step exam selection automatically selects preset generator parameters resulting in fast, accurate imaging, every time.





Q-PAC-X

Quantum Medical Imaging is pleased to feature the “Q-PACS System.” The system comes in three package types for use by the veterinary markets. The system offers large storage capacity and increased functionality, with additional options to select.

The **Q-PACX-1** system allows you to archive up to 50,000 14” x 17” images with automatic image back-up, via USB removable hard drive. This system along with the other two systems come standard with DICOM Importer, and stitching software. A useful and available feature is the ability to create animal CD’s with viewing software.

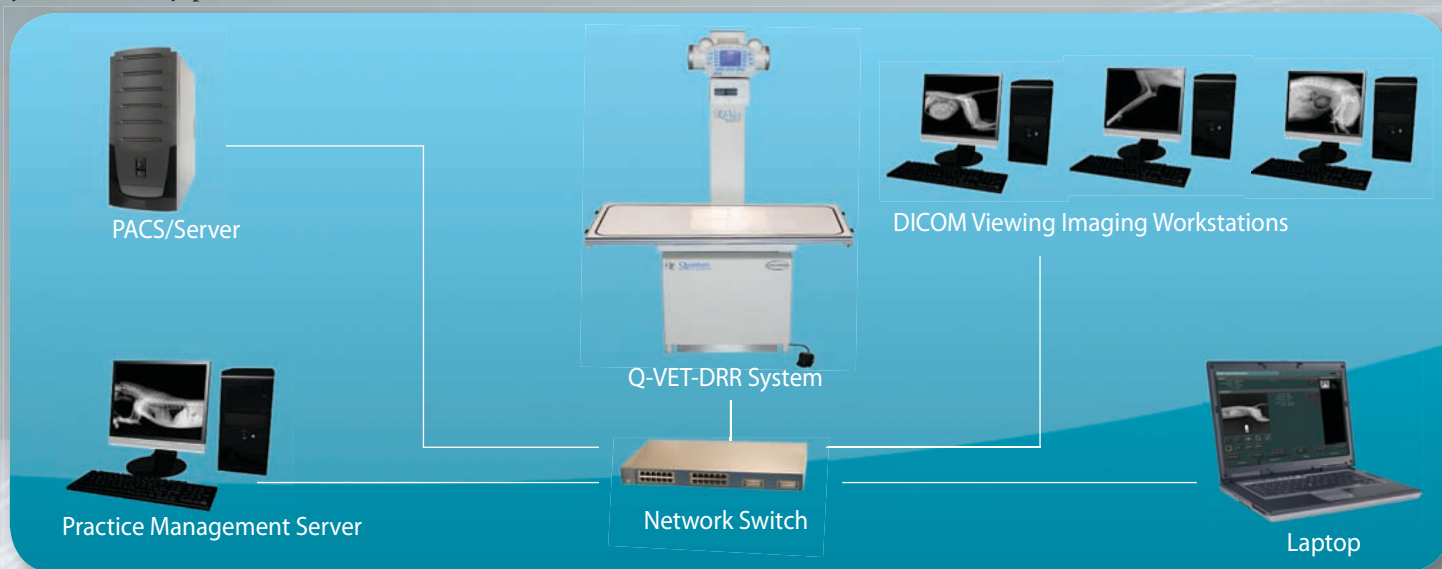
The **Q-PACX-3** increases the ability to archive approximately 100,000 14” x 17” images, as well as the standard automatic image back-up via removable hard-drive. The systems come with a manual CD/DVD Burner/Printer. This version as well as other two versions, come with measurement and annotation tools. This multi-input system also has three clinical software viewing licenses.



The **Q-PACX-5** is the largest and most comprehensive system with the capability of storing approximately 200,000 14” x 17” images. These systems include both the image back-up on a second removable hard-drive, as well as the automated CD/DVD burner including the benefit of a label printer. This system has 5 clinical software viewing licenses and the capability of having five digital modality inputs.

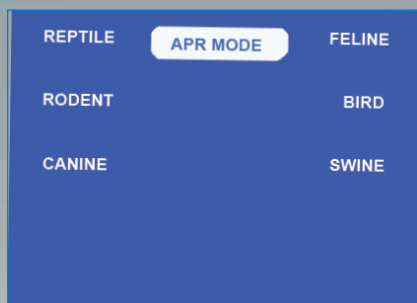
OmniVue - Viewer Software

OmniVue is a **DICOM** diagnostic viewing software for all digital imaging modalities. OmniVue is a FDA compliant DICOM viewing software. It is compatible with DICOM Send, Store, Query & Retrieve and Print functionality for easy networking with all modalities. A non-linear lookup table allows for outstanding image quality for CR and DR images. OmniVue features a full suite of the latest image processing tools and easy-to-use database management fields to streamline workflow for your veterinary practice.

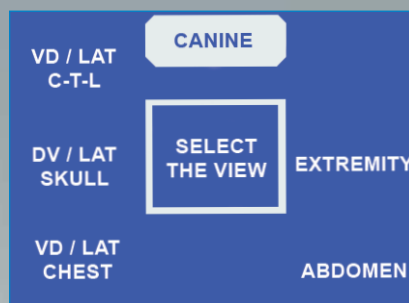




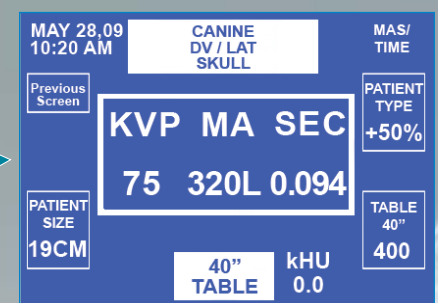
EZ-VET Control



SELECT ANIMAL TYPE FROM APR MENU



SELECT DESIRED VIEW FROM MENU



ENTER DESIRED SETTINGS
• READY FOR EXPOSURE •

Ultra High Frequency Technology, 120 kHz the EZ-VET Series generator integrates revolutionary design with superb functionality, designed for both digital and conventional imaging. The EZ-VET Series generator operates at a near-constant potential of up to 120 kHz – the highest in the industry, which equates to greater image quality. It also translates into shorter exposure times; reducing the chance that animal motion might affect examinations.

Generator Operating Modes

The EZ-VET Series enables users to select from three main operating modes (3 point, 2 point or 1 point), offering great versatility for pre-programmed or customized imaging.

*In all operating modes, the user always has the capability to override any technique parameter individually, providing uncompromising flexibility and control.

Stored Energy (SE) Generators

Quantum's advanced Stored Energy (SE) technology permits powerful operation using only a standard "low amperage" wall outlet or alternate power source. The SE's power cells are virtually maintenance-free and provide years of usage. These units are ideal in facilities where incoming power is unavailable and for mobile imaging applications. (50kW to 20kW)





Veterinary Radiographic Systems

Q-VET-FTX

EZ-VET Control

Control study parameters and image preview on LCD screen at tube side.

Collimator

FDA approved for human use. The Q-VET Series Collimators are of the highest quality assuring safety of your staff by greatly reducing exposure during procedures.

Vertical Track

Allows for quick vertical adjustment of the receptor

URO-Track

Specifically designed track for easy clean ups during an examination.

Float Top Table

Floating table to allows for quick repositioning the animal during the examination.

Float Top Table Control

Laser Line & Light Field

Laser light and the light field provide accurate positioning of the animal

Foot Control X-Ray Exposure Switch

Distinguished System Features for Q-VET-FTX

- QS-500 Series Radiographic Tubestand integrated to Table
- Vertical Travel of 41.5" (105 cm), Longitudinal Travel of 32" (81 cm)
- Electromagnetic Tube Angulation of +/- 135°, with detents at 0°, +/- 90°
- "Four-Way Float-Top Enclosed Veterinary Table" with Electronic Foot Control

Ceiling Mount for Large Animals / Zoo's

Centralized hand grips with dual soft-grips provide smooth, responsive system adjustments. Positioning of the x-ray tube is directed through a series of color-coded fingertip switches on the operator hand control, which coincide with the colors on the various rails, for vertical, horizontal and transverse movements. A convenient "All-Locks" release switch is built into each of the soft-grip controls. Lighted display windows indicate system navigation for SID, tube angle and lock functions, to assist the operator with easy and precise positioning. The table has a 650 lb. patient weight capacity, designed for large animals. (X-ray generators up to 80 kW available - consult factory.)



All Q-VET Systems Feature

- 32 kW ULTRA High Frequency Generator (other x-ray generators available - consult factory)
- NEW “EZ-VET- Control” - *LCD Color Display with High Resolution Viewing*
- Collimator: Certified for Safety (*Meets FDA Requirements for Human Use*)
- “Light Localizer” for Field Size
- “Laser Feature” for Accurate Patient Positioning
- 650 lb Patient Capacity Table
- “URO-TRACK” System
- Includes 4 Patient “tie-down” Cleats

Q-VET-FX



Distinguished System Features for Q-VET-FX

- QS-500 Series Radiographic Tubestand integrated to Table
- Vertical Travel of 41.5” (105 cm), Longitudinal Travel of 32” (81 cm)
- Electromagnetic Tube Angulation of +/- 135°, with detents at 0°, +/- 90°
- “Open Style Veterinary Table” with longitudinal travel of the receptor

Distinguished System Features for Q-VET-ITT

- Integrated Tubestand with 40” SID, Fixed Position at Center of Receptor
- 29.5 Longitudinal Travel, 5” Transverse Table (Electric)
- Collimator Light is activated when Float-Top Control is in use
- Exposure Foot Switch (2 Position)
- Easily Upgrade to Direct Digital (DR-Ready System)
- “Four-Way Float-Top Enclosed Veterinary Table” with Electronic Foot Control

Q-VET-ITT



Quantum Medical Imaging

Pioneering technology from the premiere innovator in veterinary imaging...



Corporate Overview

Quantum Medical Imaging is a highly innovative company which designs and manufactures high quality veterinary radiographic systems for veterinary hospitals and imaging centers around the world. The company's mission is to supply the radiographic imaging industry with superior products for enhanced diagnostic capability.

Designed for Technologists

Designed by a team of engineers with extensive input from technologists, Q-VET systems are highly refined for logical and efficient operation. This unique approach to system development simplifies radiographic examinations and assures that Quantum products meet the growing needs of radiology. Quantum's technology is proven in hundreds of veterinary installations worldwide.

From the design stage through final product testing, Quantum Q-VET systems integrate high quality, durable materials for robust construction and advanced electronics for optimal performance. Rigorous manufacturing standards and a commitment to evolving technologies assure long-term system value and customer satisfaction. The company's veterinary radiographic system solutions are backed by our Gold Star network of factory-authorized dealers, for sales and service.

Support

All Q-VET Series Systems are supported by Quantum IT, Digital Imaging, and X-Ray specialists. You can rest a sure knowing all aspects of your system is fully cared for.



© 2009 Quantum Medical Imaging, LLC
p/n: QMI-Q-Vet (06/09)

Dealer Information

A Walsh Imaging, Inc.
55 Cannonball Road
Pompton Lakes, NJ 07442

Phone 1-866-429-9729
Web www.awalshimaging.com